

NOTICE AND AGENDA

SPECIAL MEETING

**MANAGEMENT COMMITTEE for the
MONTEREY REGIONAL STORMWATER
MANAGEMENT PROGRAM**

Management Committee Member Retreat

DATE: December 17, 2021
TIME: 10:00 a.m.
LOCATION: 125 Ocean View Blvd., Suite 122, Pacific Grove, CA 93950

Officers: Chairperson: Michael Trapani, County of Monterey
Vice-Chairperson: Leon Gomez, City of Sand City

Participating Entities: City of Carmel-by-the-Sea City of Del Rey Oaks
City of Monterey City of Pacific Grove City of Sand City
City of Seaside County of Monterey

Other Coordinating Entities:
Carmel Unified School District Pacific Grove Unified School District
Monterey Peninsula Unified School District Pebble Beach Company

Ex-Officio Members:
Association of Monterey Bay Governments Monterey Bay National Marine Sanctuary

Pacific Grove Shoreline Tour – Retreat

Page

- | | |
|--|---------------|
| 1. Call to Order / Roll Call | n/a |
| 2. Welcome and Introductions | n/a |
| 3. Pacific Grove Virtual Shoreline Tour Site Visit | n/a |
| 4. Pacific Grove/Monterey ASBS Wet-Dry Weather Storm Water
Capture/Diversion Project Site Visit | (Attach. 1) 2 |
| 5. Closing | n/a |
| 6. Meeting Adjournment | n/a |

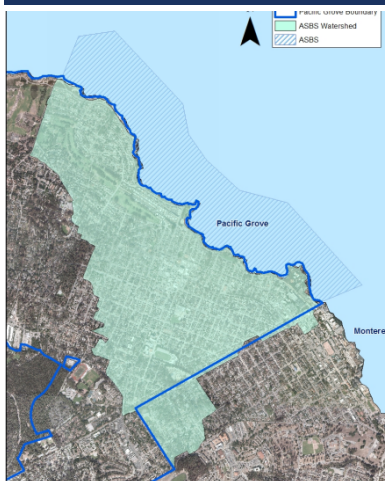
PROP I - URBAN DIVERSION

PACIFIC GROVE / MONTEREY ASBS WET-DRY WEATHER

STORMWATER CAPTURE AND DIVERSION PROJECT



PURPOSE



To implement projects that will reduce or eliminate the potential for urban stormwater runoff from reaching the PG Area of Special Biological Significance (ASBS)

- Collaboration / Partnerships
- Creative Funding to Implement Water Quality Priorities
- Regional Resource Protection & Augmentation



WHAT IS AN ASBS

- Pacific Grove (PG)
Area of Special Biological
Significance (1 of 34 ASBS)
- ASBS = Subset of State
Water Quality Protection
Areas



PACIFIC GROVE ASBS

- **California Ocean Plan** → Areas of Special Biological Significance (“ASBS”)
- **ASBS = State Water Quality Protected Areas (SWQPAs)**
 - **Beneficial uses require protection**
- **PG ASBS = 500 ocean acres** (within Mtry. Bay National Marine Sanctuary)
 - Along PG’s northeast coastline (Mtry. Bay Aquarium to Point Pinos)
 - Watershed is 922 acres (100 acres in Mtry drain to PG)
- **PG storm water outfalls discharge to the ASBS**
 - Important for PG & Monterey to work together
 - Prevent pollutant discharges and protect ASBS



ASBS STUDIES, PROJECTS, AND REGIONAL EFFORTS

2001-2007 **Phases 1 & 2 Urban Diversions**

- Clean Beaches Initiative Grants

2006 **Regional ASBS Alternatives Analyses**

- PG ASBS / Carmel Bay ASBS opportunities and constraints
- Divert, store, treat, and/or reuse stormwater runoff

2011 **Phase 3 Urban Diversion** (Prop. 40 Grant)

2012 **SWRCB Approval - ASBS Special Protections**



ASBS STUDIES, PROJECTS, AND REGIONAL EFFORTS

(CONTINUED)

2012-2014 **Refined Feasibility Study** – Preferred Project, 40% Design Engineer. Rpt.

- (1) David Avenue Reservoir Improvements
- (2) Pine Avenue Conveyance
- (3) Ocean View Conveyance
- (4) Point Pinos Storm Water Treatment Facility
- (5) Additional Diversion Opportunities

2013-2016 **Central Coast Regional ASBS Monitoring Effort**

- Identify priority outfall(s) – pollutant(s) of concern, exceedances
- Pacific Grove ASBS priority outfall = Forest/Lovers Point
- Bacteria & poly aromatic hydrocarbons (PAHs)

ASBS STUDIES, PROJECTS, AND REGIONAL EFFORTS (CONTINUED)

2014-2016 Finalized 'PG ASBS Compliance Plan'

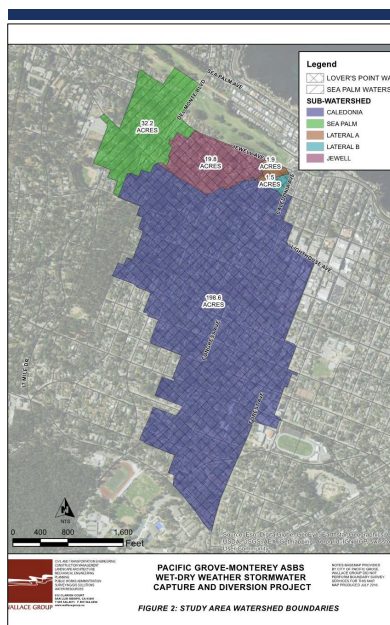
- Further refined PG ASBS engineering analyses

2016-2020 Prop I ASBS Implementation Grant/Project - Award/Implement

- Pacific Grove-Monterey ASBS Wet-Dry Weather Storm Water Capture/Diversion

5 project components:

- 1) Construct Phase 4 urban diversion system (Lovers Pt/Sea Palm)
- 2) Analyze additional diversion opportunities
- 3) Repair/rehab. existing sanitary sewer systems
- 4) Effectiveness evaluation/monitoring
- 5) Public education/outreach



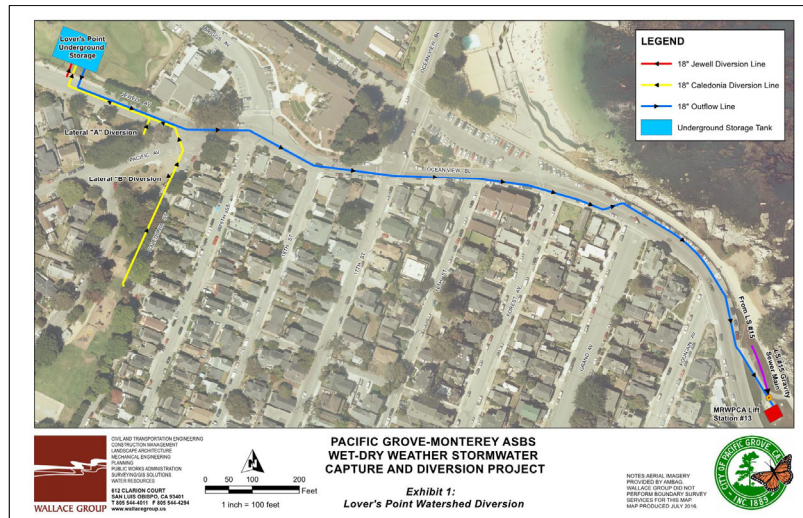
PROJECT GOALS

- Capture 100% of Dry Weather Flows
- Capture Runoff from the 85th Percentile Storm
 - ~0.8 inch/day storm
- Address Regional Priorities
 - Protect ASBS water quality
 - Augment regional water supply
 - Capitalize on community-funded projects providing Water Quality protection to ASBS



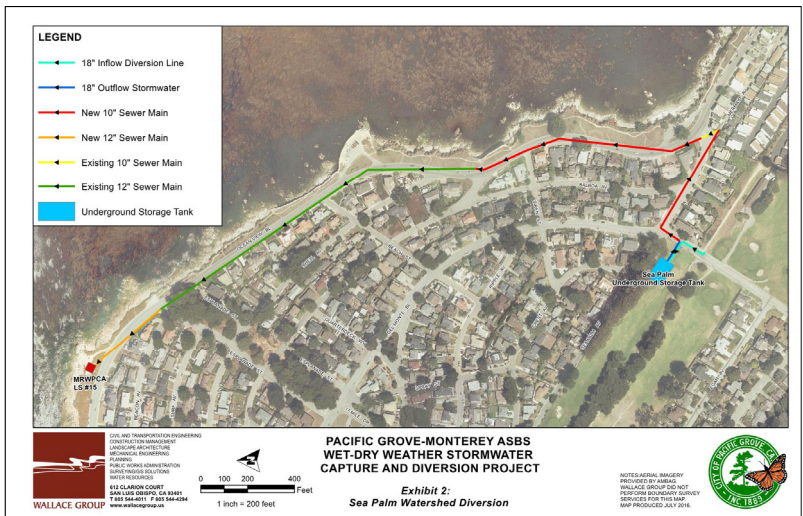
LOVERS POINT DIVERSION

- 221.8 acres
- 3.14 acre-feet (AF) of water diverted
- Total Diverted:
 - 44.1 AF in an Average Year
 - 12.8 AF in Dry Years
 - 108.0 AF in Wet Years
- 430,000 gal Buried Storage Tank
- Dedicated SW Main to LS 13



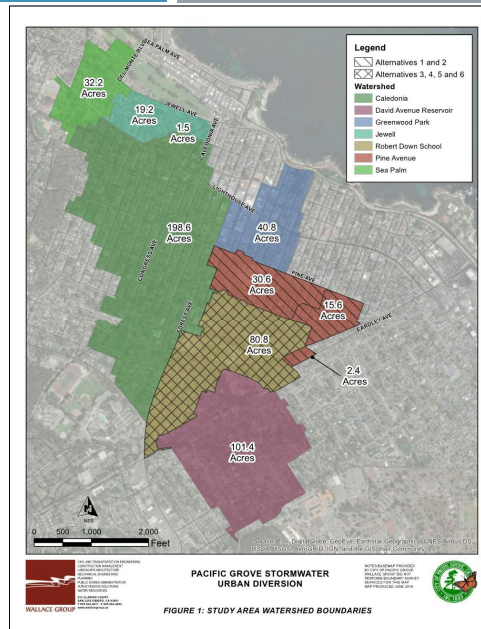
SEA PALM DIVERSION

- 32.2 acres
- 0.43 AF of water diverted
- Total Diverted:
 - 6.0 AF in an Average Year
 - 1.7 AF in Dry Years
 - 14.9 AF in Wet Years
- 50,000 gal Buried Storage Tank
- Joint Sewer/SW to LS 15

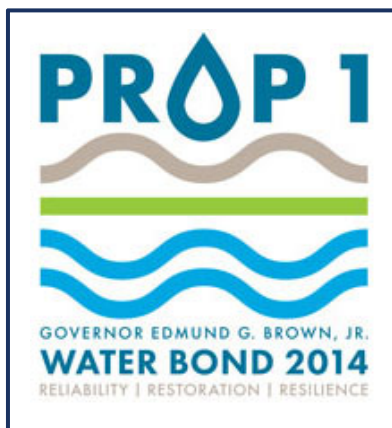


ADDITIONAL STUDIES

- City of Monterey
 - Project and Funding Partner
- David Avenue Reservoir
- Pine Street
- Robert Down School
- Greenwood

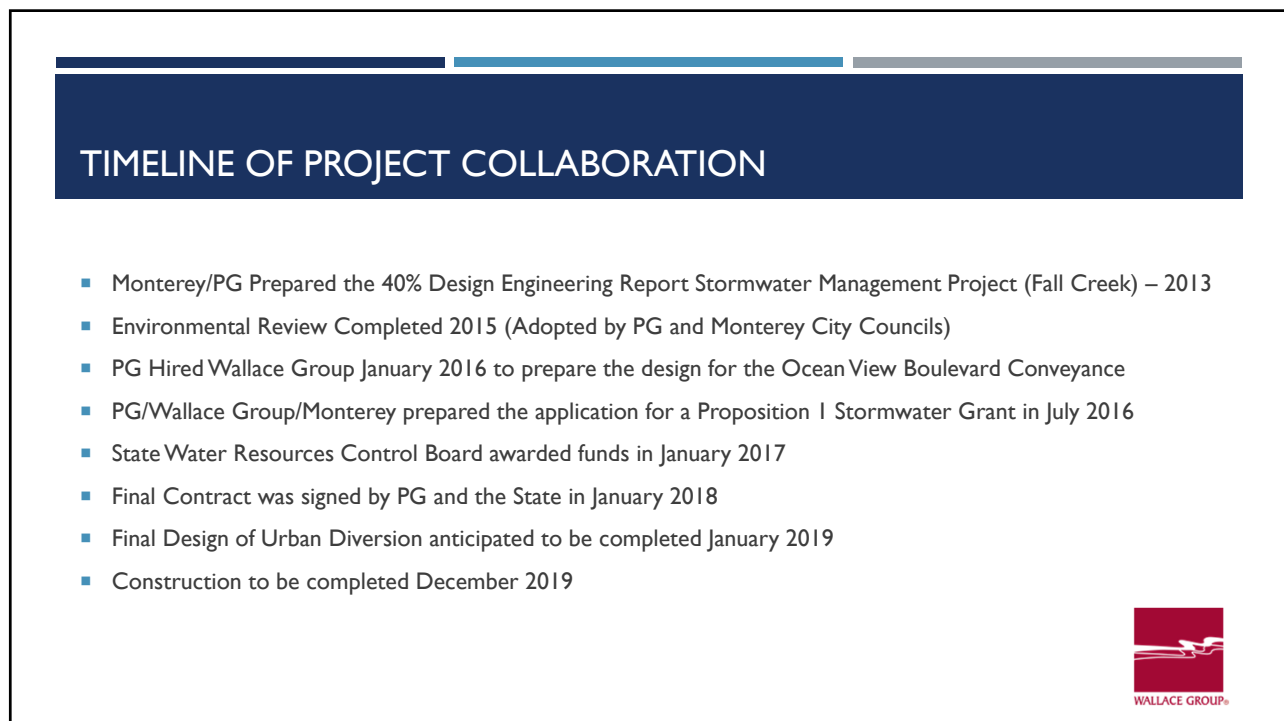
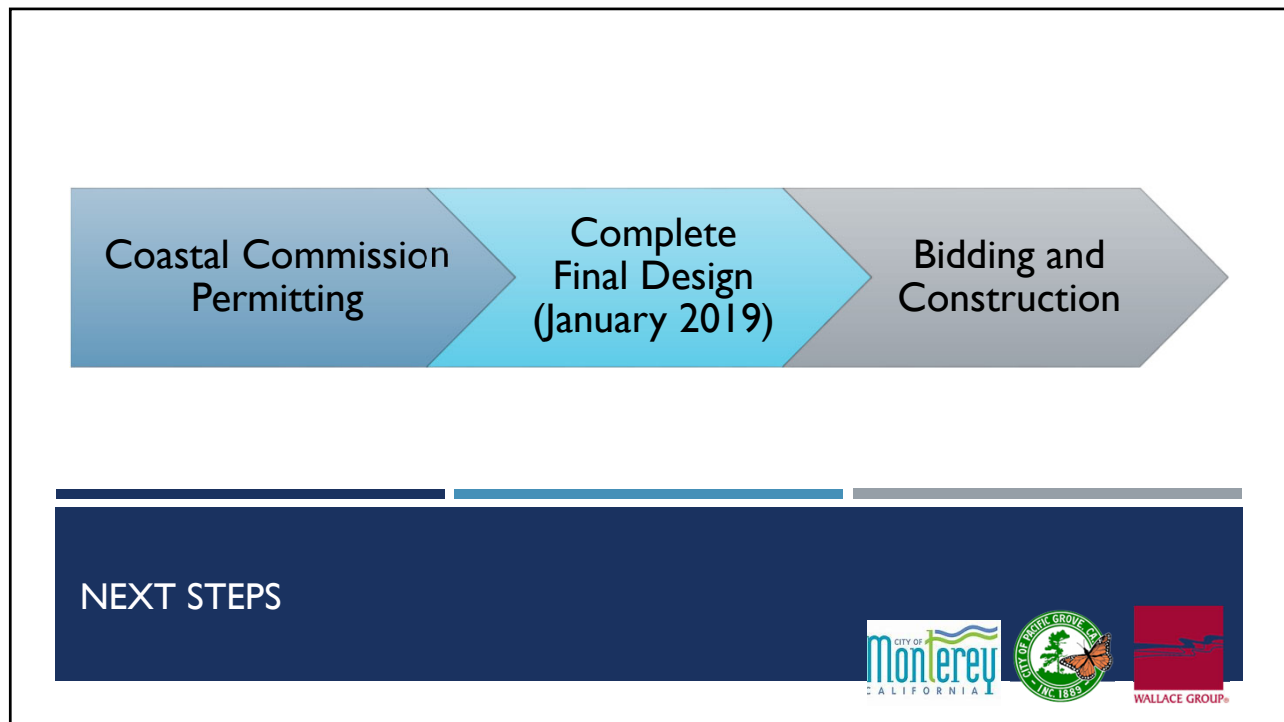


CREATIVE PROJECT FUNDING



- Grant Awarded - \$4,427,229
- Matching Funds - \$4,518,943
 - In-Kind Services
 - City of Pacific Grove Sewer Rehabilitation Funds
 - Sewer CIP 3: Asilomar Sewer Main Upgrade
 - Sewer CIP 4: Crocker & Asilomar Manhole Upgrade
 - Sewer CIP 5: 14th Street Sewer Main Upgrades
 - Sewer CIP 8: Carmel Sewer Main Upgrade
 - City of Monterey Sanitary Sewer Rehabilitation Project
 - Monterey ASBS Sanitary Sewer Pipes and Manholes – SSO prevention
 - Community Sewer Rates repayment of CWSRF loan (Rehab in ASBS drainage)
 - Monitoring and Reporting
 - Education and Outreach





QUESTIONS

